



Sprayberry Office Park

OFFERING SUMMARY

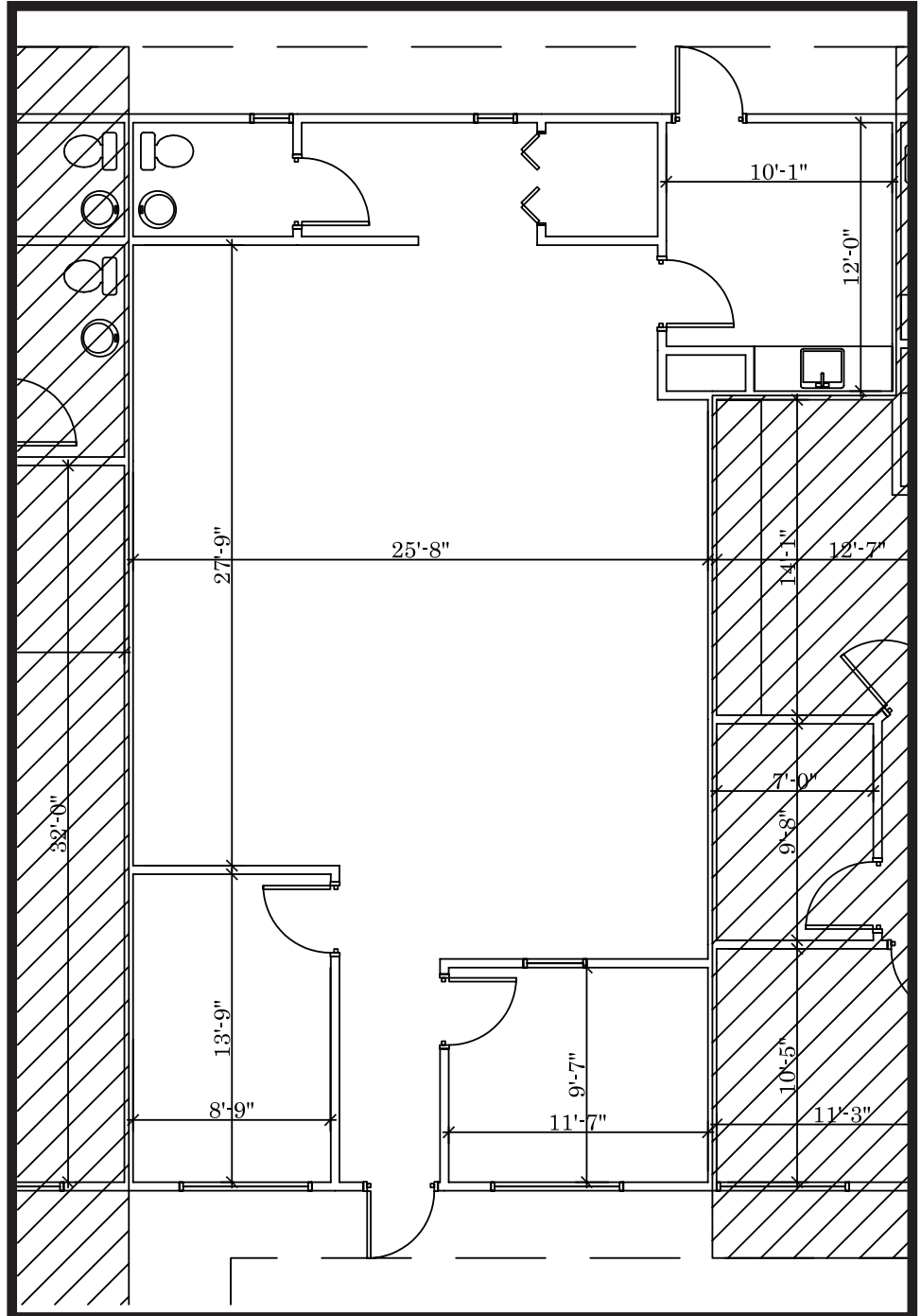
Property Details	
Property Name:	Sprayberry Office Park
Address:	2790 Sandy Plains Rd Marietta, GA
Price Per SF:	\$14.00/SF - NNN
Available Space:	Suite 101 - 1,574 SF
Zoning:	Retail/Office
Parking Spaces:	5 per 1,000 SF
Sandy plains (VPD):	44,400 VPD
Post Oak Tritt (VPD):	14,300 VPD
Signage:	Free signage on Post Oak Tritt and Sandy Plains
Points of Interest:	Outstanding location next to new mixed-use development

Demographics	1 Mile	3 Mile	5 Mile
Population:	8,111	63,650	173,259
Households:	3,059	23,113	65,214
Median HHI:	\$84,357	\$86,553	\$77,716
Average HHI:	\$105,168	\$111,528	\$104,276
Employers:	504	2,959	9,811



THERESA JOHNSON
Partner
tjohnson@dowdcre.com
770.329.9330

SUITE 101



NOTE:
 THIS PLAN WAS DRAWN W/O THE BENEFIT OF AN ON SITE FIELD VERIFICATION. PRIOR TO CONSTRUCTION, FACILITEC, INC. RECOMMENDS THAT A VERIFICATION IS COMPLETED. IT WILL BE THE RESPONSIBILITY OF THE G.C. TO NOTIFY FACILITEC, INC OF ANY PROBLEMS. FACILITEC, INC. SHALL NOT BE HELD RESPONSIBLE FOR FOR ANY CODE INFRACTIONS DUE TO THIS MATTER.

ANY FURNITURE OR EQUIPMENT SHOWN IS NIC AND ONLY SHOWN FOR PLANNING PURPOSES.

PRELIMINARY PLAN
 SHEET NO:
P-1
 SHEET NO:

REV	DATE:	DISCRPTION:	DRAWN BY:
	09.08.11	AS-BUILT	MS
			JOB #: 11123
			RSF: 1,574

SUITE 101
 SPRAYBERRY OFFICE PARK
 2790 SANDY PLAINS ROAD
 MARIETTA, GA 30066

FACILITEC
 WORKING SPACES | CONTROLLED COSTS

SUITE 501
 260 PEACHTREE STREET
 ATLANTA, GA 30303
 (404) 816-6464

THIS DRAWING IS THE PROPERTY OF FACILITEC, INC. AND MAY NOT BE REPRODUCED OR USED WITHOUT THE WRITTEN PERMISSION OF FACILITEC, INC.

©COPYRIGHT
 FACILITEC, INC.